



# ***HDPE Pipe Welding Machine***

# HDPE MANUAL BUTT FUSION MACHINE

AKIRA ENGINEERS

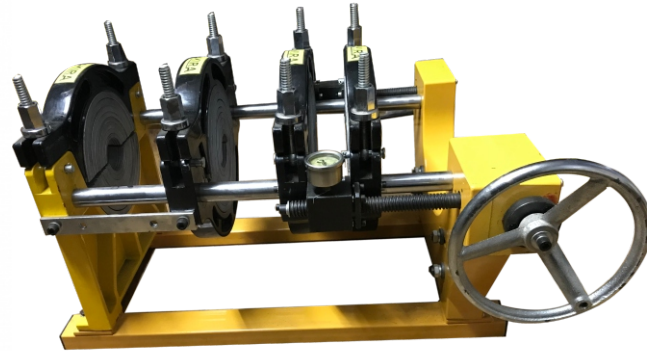


## LIGHT WEIGHT MODEL WITHOUT PRESSURE GAUGE & GEAR



**Pipe Trimmer**

## HEAVY DUTY DOUBLE GEAR TYPE WITH PRESSURE GAUGE



**Mirror**

**Brief:** Suitable for welding of plastic pipes and fittings made from PE, PP & PVDF. Clamps are made of Aluminum material. Consists of Planning Tool, Digital Heating Plate, Basic Frame and Support. Available in both Heavy Duty & Light models (with and without Pressure Gauge). Available in both Gear type & without Gear type models (economic range & Quality Range).

### Machine Specification

Model	AKIRA160M	AKIRA200M	AKIRA250M
Clamps	4-clamps	4-clamps	4-clamps
Welding Range (mm)	50,63,75,90,110, 125,140,160	63,75,90,110,125,140, 160,180,200	63,75,90,110,125,140, 160,180,200,225,250
Heating Plate Max. Temp	270° C		
Temp. Deviation in Surface	+ -5° C		
Working Voltage	220 V 50HZ		
Heating Plate Power	1.0KW	1.60KW	2.0KW
Planning Tool Power	0.9KW	0.9KW	1.0KW
Total Power	1.9KW	2.5KW	3.0KW
Pressure Adjustable Range	0.6 to 3 MPa		
Weight	45 kg	60 kg	111 kg

**Pipe Trimmer****Mirror****Panel Based Hydraulic Unit**

**Brief:** Suitable for welding of plastic pipes and fittings made from PE, PP & PVDF. Be made of Aluminium material. Consists of Planning Tool, Heating Plate, Basic Frame, Hydraulic Unit & Support.

- Features:**
1. Removable PTFE coated heating plate with separate temperature control system.
  2. Electric Planning Tool with reversible double cutting edge blades.
  3. Hydraulic Unit provides welding machine with compressing power.
  4. Be made of Aluminium material.
  5. Low starting pressure ensures reliable welding quality of small pipes.
  6. Temperature Controller and Timer, easy to know the exact time and temperature.

### Machine Specification

Model	AKIRA160H	AKIRA200H	AKIRA250H	AKIRA315H	AKIRA355H
Welding Range (mm)	50 63 75 90 110 125 140 160	50 63 75 90 110 125 140 160 200	63 75 90 110 125 140 160 180 200 225 250	90 110 125 140 160 180 200 225 250 280 315	160 180 200 225 250 280 315 355
Heating Plate Max. Temp.	270°C				
Temp. Deviation in Surface	< ±5°C				
Pressure Adjustable Ranges	0-6.3MPa				
Working Voltage	220V 50HZ				
Heating Plate Power	1.50KW	1.80KW	2.10KW	3.5KW	3.60KW
Planning Tool Power	1.10Kw	1.10Kw	1.10Kw	1.10Kw	1.10KW
Hydraulic Unit Power	0.75KW	0.75KW	0.75KW	0.75KW	0.75KW
Total Power	3.35KW	3.65KW	3.95KW	5.35KW	5.45KW
Weight	120KG	135KG	180KG	230KG	260KG
Volume	0.50M <sup>3</sup>	0.53M <sup>3</sup>	0.80M <sup>3</sup>	1.0M <sup>3</sup>	1.1M <sup>3</sup>



Pipe Trimmer



Mirror

## Machine Specification

Model	AKIRA400H	AKIRA450H	AKIRA500H	AKIRA630H
Welding Range (mm)	200 225 250 280 315 355 400	280 315 355 400 450	280 315 355 400 450 500	315 355 400 450 500 560 630
Heating Plate Max. Temp.	270°C			
Temp. Deviation in Surface	< ±7°C			
Pressure Adjustable Ranges	0-8.0MPa			
Working Voltage	380 V 50HZ/220V 50HZ			
Heating Plate Power	4.0KW	5.38KW	6.50KW	9.35KW
Planing Tool Power	1.50Kw	1.50KW	1.50Kw	1.50Kw
Hydraulic Unit Power	1.50KW	1.50KW	1.50KW	1.50KW
Total Power	7.0KW	8.38 KW	9.50KW	12.35KW
Weight	420KG	450KG	560KW	650KG
Volume	1.8M <sup>3</sup>	2.2M <sup>3</sup>	2.5M <sup>3</sup>	3.2M <sup>3</sup>





Pipe Trimmer



Mirror

## Machine Specification

Model	AKIRA800H	AKIRA1000H	AKIRA1200H	AKIRA1600H	AKIRA1800H	AKIRA2000H	AKIRA2600H
Welding Range (mm)	500 560 630 710 800	710 800 900 1000	800,900, 1000,1200	1200 1400 1600	1200 1400 1600 1800	1600 1800 2000	1800 2000 2400 2600
Heating Plate Max. Temp.	270°C						
Temp. Deviation in Surface	< ±10°C						
Pressure Adjustable Ranges	0-16MPa			0-25MPa			
Working Voltage	380 V 50HZ/220V 50HZ						
Heating Plate Power	12.5KW	17.5KW	21.5KW	35KW	42.0KW	70.0KW	90.0KW
Planning Tool Power	2.2KW	3.0KW	4.0Kw	7.5kw	7.5kw	7.5KW	7.5kw
Hydraulic Unit Power	3.0KW	3.0KW	3.0KW	3.0KW	3.0KW	5.5KW	5.5KW
Electric Crane Power	0.5KW	0.5KW	1.0KW	----	----	----	----
Total Power	18.2KG	24.0KG	29.5KW	45.5KW	52.5KW	83.0KW	103.0KW
Weight	1400KG	2600KG	2800KG	5600KG			



**Brief:** Electrofusion welding machine is suitable for connecting PE pipes and fittings with coupling which are used for gas and water supply.

- Features:**
1. Design and according to ISO12176 electro-fusion welder international standard.
  2. High level MCU is used as control core, equipped with LCD display, all welding parameters could be displayed.
  3. Light weight, easy operation.
  4. By real-time monitoring weld status, abnormal welding process could be terminated in short time.
  5. Built in memory, can record more than 500 welding records.
  6. Welding records could be download to USB flash disk via USB interface. (Optional Function)
  7. Welding wiring is easy and simple to avoid wiring error.
  8. Welding parameters input modes: (1) Manually Set (2) Read in by bar code scanner.

## Machine Specification

Model	AKIRA200	AKIRA315	AKIRA500	AKIRA800
Welding Range (mm)	20-200mm	20-315mm	20-500mm	20-800mm
Input Voltage (V)	AC 170-250 50HZ			
Output Power (KW)	2KW	3KW	5KW	11KW
Output Voltage (KW)	8-48V			
Control Mode	Constant Current/Constant Voltage			
Temp. Measuring Precision (°C)	±0.5°C			
Weight (KG)	20	25	28	18



**160mm  
Socket Fusion Machine**



**20 to 63mm  
Socket Fusion Machine**



**75 to 110mm  
Socket Fusion Machine**

## Features:

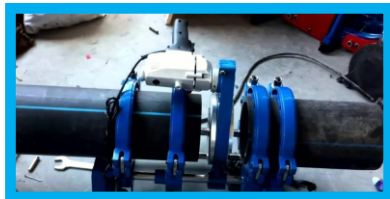
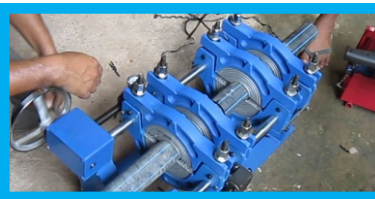
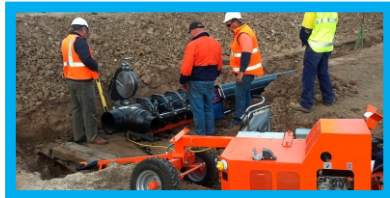
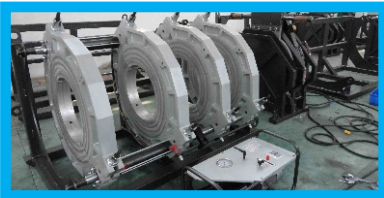
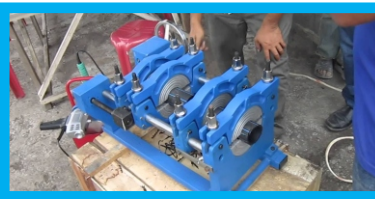
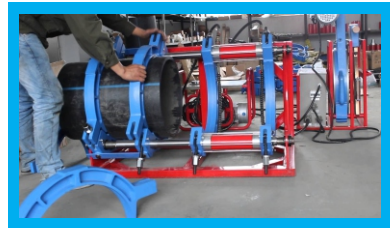
1. Trouble-free functionality.
2. Long-operational life.
3. Rugged construction.
4. Noise-free operations.
5. Double Heating Element.
6. Heating elements made of Non Corrosive material.
7. On / Off switches have special illuminations to ensure easy working.
8. Variable Thermostat is provided 0 to 300°C.
9. Body and Foot Stand - Powder coated Aluminium.
10. Handles are made of Heat resisted materials for easy & safe Handling.

## Machine Specification

Model	AKIRA63	AKIRA110	AKIRA160
Size (in mm)	20 to 63 mm	75 to 110 mm	160 mm
Die (in mm)	20,25,32,40,50,63	75,90,110 mm	160 mm
Power	1500 watt/220 v AC	1500 watt/220 v AC	2000 watt/220 v AC
Heater	Double	Double	Single
Body	Aluminum	Aluminum	Aluminum
Stand	Multifunctional Aluminum		Heat Resistance Handle
Wire	2 Mtrs (3 Pin Plug)	2 Mtrs (3 Pin Plug)	2 Mtrs (3 Pin Plug)
Temperature Regulator	0 to 300 degree C	0 to 300 degree C	0 to 300 degree C
Cut Off	Automatic	Automatic	Automatic



# AKIRA ENGINEERS™



🏠 A-06, Khodiyar Estate,  
Inside Sakriba Estate, Phase 4, GIDC,  
Vatva, Ahmedabad, Gujarat 382445

☎ +91 - 99982 83968,

☎ +91 - 99099 99911

✉ info@akiraengineers.com, sales@akiraengineers.com

🌐 www.akiraengineers.com